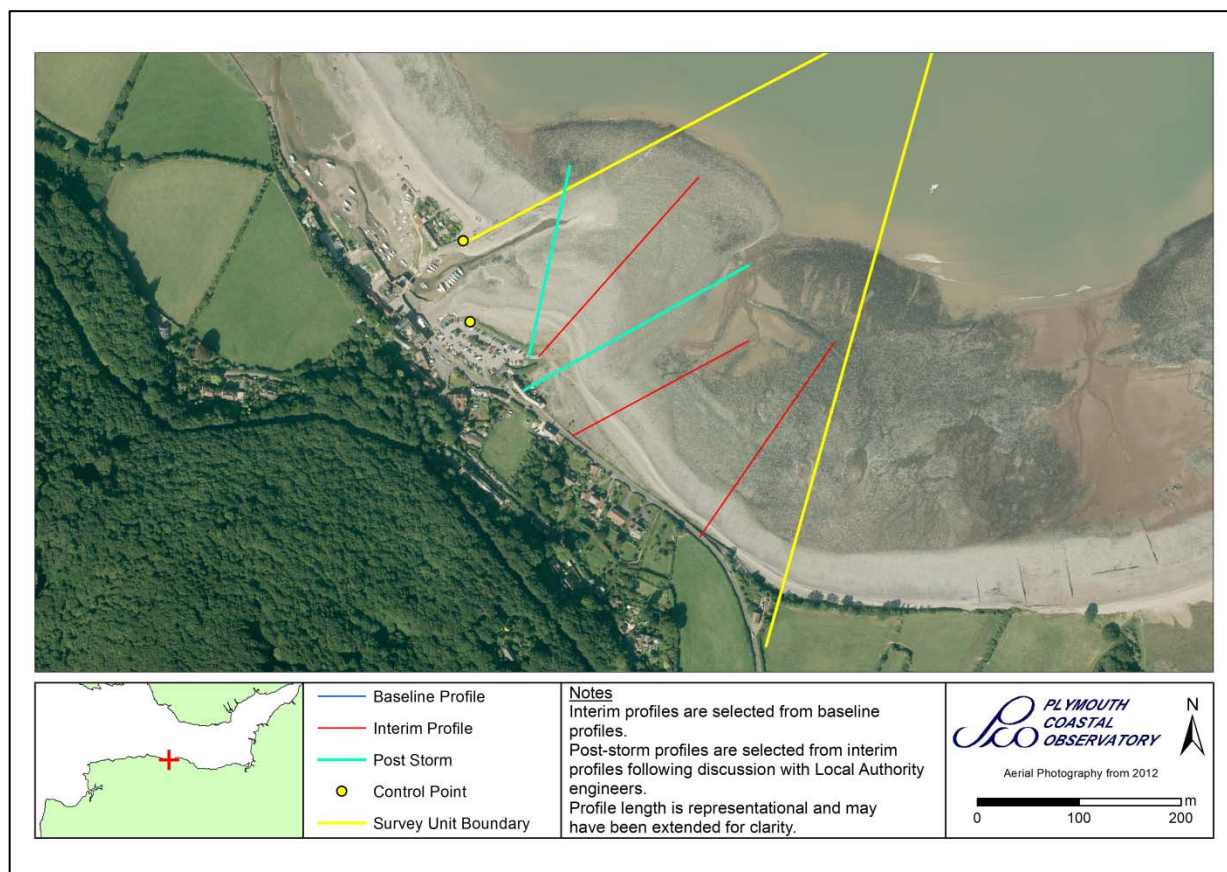


|                    |                     |
|--------------------|---------------------|
| <b>Survey Unit</b> | <b>7dPORL2</b>      |
| <b>Local Name</b>  | <b>Porlock Weir</b> |



| Survey Schedule      |                              |                                 |
|----------------------|------------------------------|---------------------------------|
| Survey Type          | Frequency                    | Profile Spacing / Survey Extent |
| Topographic Baseline | 1 Per 5 Year Phase           | 50m to MLWS                     |
| Topographic Interim  | Spring and Autumn            | 150m to MLWS                    |
| Aerial Photography   | 1 Per 5 Year Phase           | MLWS                            |
| LiDAR                | 2011/12, 2013/14 and 2015/16 | MLWS                            |
| Habitat Mapping      | 1 Per 5 Year Phase           | As Required                     |

| List of Interim Profiles (West to East) |          |          |
|---|----------|----------|
| 7d01062A                                | 7d01062B | 7d01062C |
| 7d01063A                                | 7d01066A |          |

For more information on survey types click [here](#)

The latest annual report for this survey unit can be found on our [website](#)

Click [here](#) to access a quick guide to downloading our data.