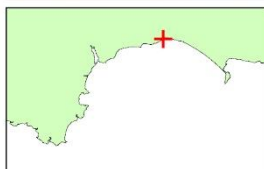
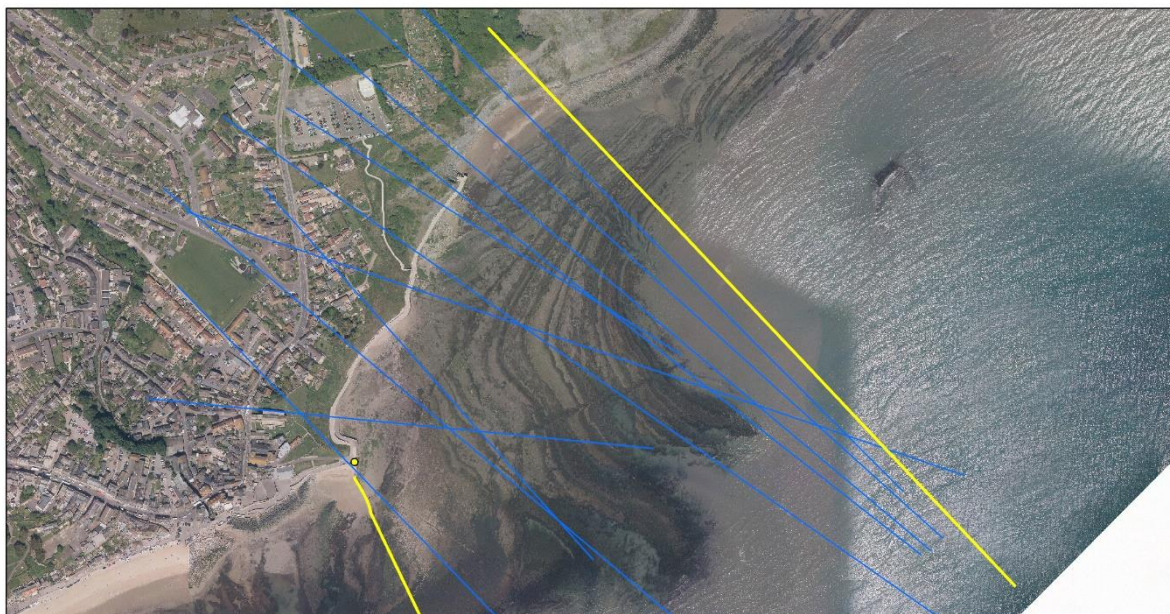


## Survey Schedule

### Phase 4 – 2021-2027

<b>Survey Unit</b>	<b>6aSU6-1</b>
<b>Local Name</b>	<b>Lyme Regis</b>



- Baseline
- Interim
- Post Storm
- Control Point
- Survey Unit Boundary

#### Notes

There are no interim profiles. Post-storm profiles are selected from baseline profiles following discussion with Local Authority engineers. Profile length is representational and may have been extended for clarity.



## Survey Schedule

Survey Type	Frequency	Profile Spacing / Survey Extent
Topographic Baseline	1 Per 6 Year Phase	50m to MLWS
Topographic Interim	None	150m to MLWS
Aerial Photography	2 Per 6 Year Phase	MLWS
LiDAR	2022/23, 2024/25 and 2026/27	MLWS
Habitat Mapping	2 Per 6 Year Phase	As Required

## List of Baseline Profiles (East to West)

6a00944	6a00945	6a00946
6a00947	6a00947A	6a00949
6a00950	6a00951A	6a00952
6a00954	6a00953A	

For more information on survey types click [here](#)

The latest annual report for this survey unit can be found on our [website](#)

Click [here](#) to access a quick guide to downloading our data.